

H-D

MANAGEMENT

COMPANY

Frontier County Cropland

LOCATION: From Curtis drive south 1 mile on Hwy 18 to Road 391, turn right and drive 6 miles south to Road 738, turn left and drive 3/4 miles east to the property.

LEGAL: Part of the E 1/2 of Section 33-7-28, Part of the N 1/2 of Section 34-7-28, and Part of the NE 1/4 of Section 28-7-28, Frontier County, Nebraska

DESCRIPTION: 229.7 certified irrigated acres (Middle Republican NRD) including 198.1 under center pivot and 114.1 dryland farm acres.

FSA INFORMATION: Farm has 169.43 acres of wheat base with PLC yield of 41, and 79.4 acres of soybean base with PLC yield of 40.

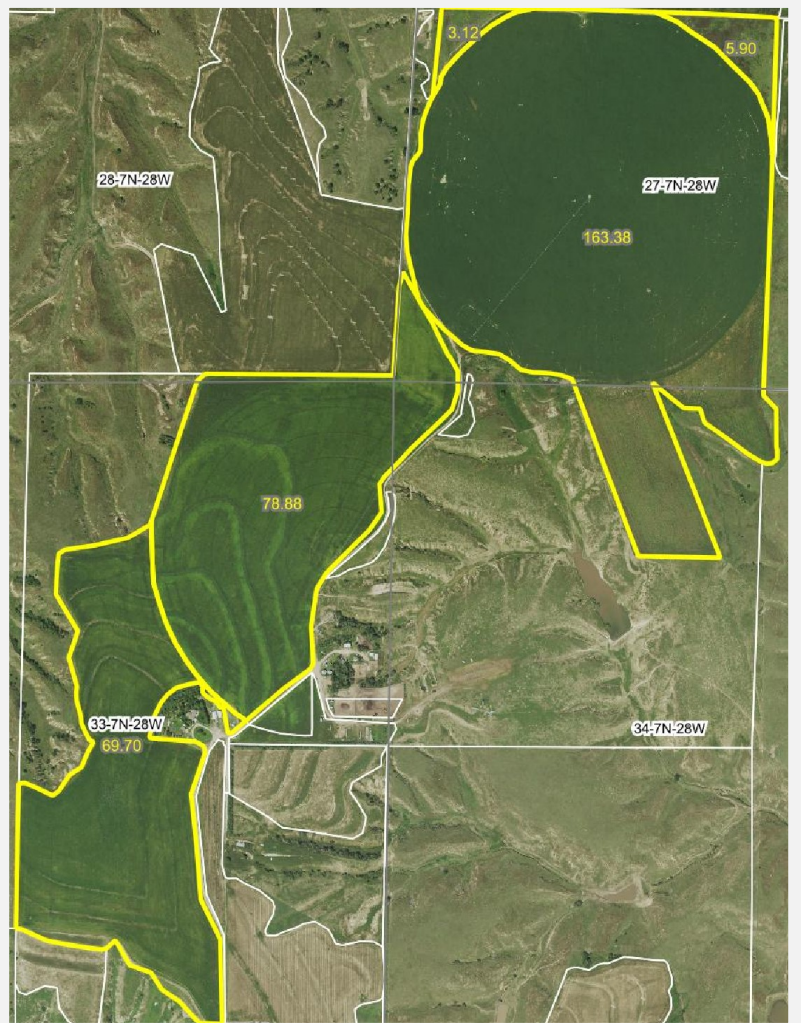
PRICE: \$1,450,000

CONTACT US:

(308) 532-1228

info@h-dmanagement.com

www.h-dmanagement.com



Information is from sources considered reliable, however the accuracy is not guaranteed by H-D Management Co., seller or agent. We urge prospective buyers to inspect and rely upon their own conclusions. Offering is subject to error, omissions, prior sale, price change or withdrawal without notice. Maps and boundaries are estimates.

H-D

MANAGEMENT

COMPANY

*M. Kurt Pieper—Broker
Hank Knisley—Agent
Justin Pieper—Agent*

720 E 4th
North Platte, Nebraska 69101
308-532-1228

Frontier County Dryland

Property Summary: For sale is a highly productive farm south of Curtis, NE. The property is composed of Holdrege, Hall, Coly, and Uly silt loam soils. 2 Valley center pivots irrigate 198.1 acres and the property has an additional 31.6 certified irrigated acres. 114.32 acres are dryland farmed. The well is powered by a CAT Model 3056 with a twin disc clutch, a Western Land Roller pump and an Amarillo gear drive rated for 150 Hp. The Valley 8000 in the SW 1/4 of Section 27 irrigates 134.2 acres, is designed for 800 GPM, is 1319' long, has 11.2x38" tires, and was installed in 2014. The Valley 8000 in the NE 1/4 of Section 33 irrigates 63.9 acres, is designed for 700 GPM, is 1299' long, and also has 11.2x38" tires.



Information given is correct as we are able to determine, but we make no guarantees as to its accuracy and urge prospective buyers to inspect and rely upon their own conclusions. Offering is subject to error, omissions, prior sale, price change or withdrawal without notice. Maps and boundaries are estimates.



*M. Kurt Pieper—Broker
Hank Knisley—Agent
Justin Pieper—Agent*

720 E 4th
North Platte, Nebraska 69101
308-532-1228