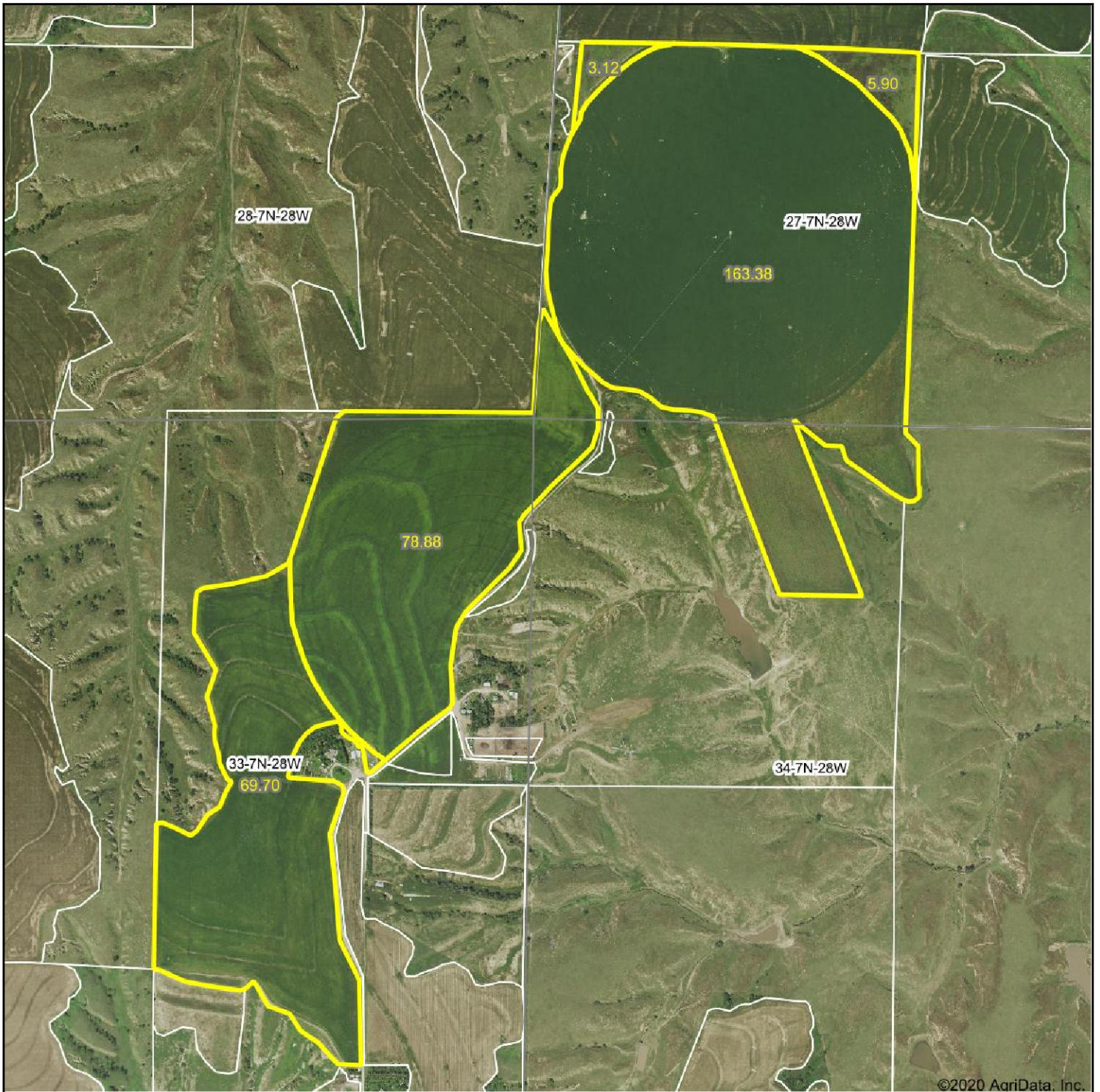
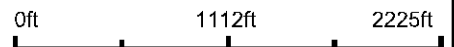


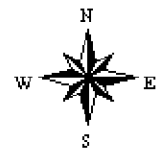
Aerial Map



Map Center: 40.539075, -100.497912



34-7N-28W
Frontier County
Nebraska

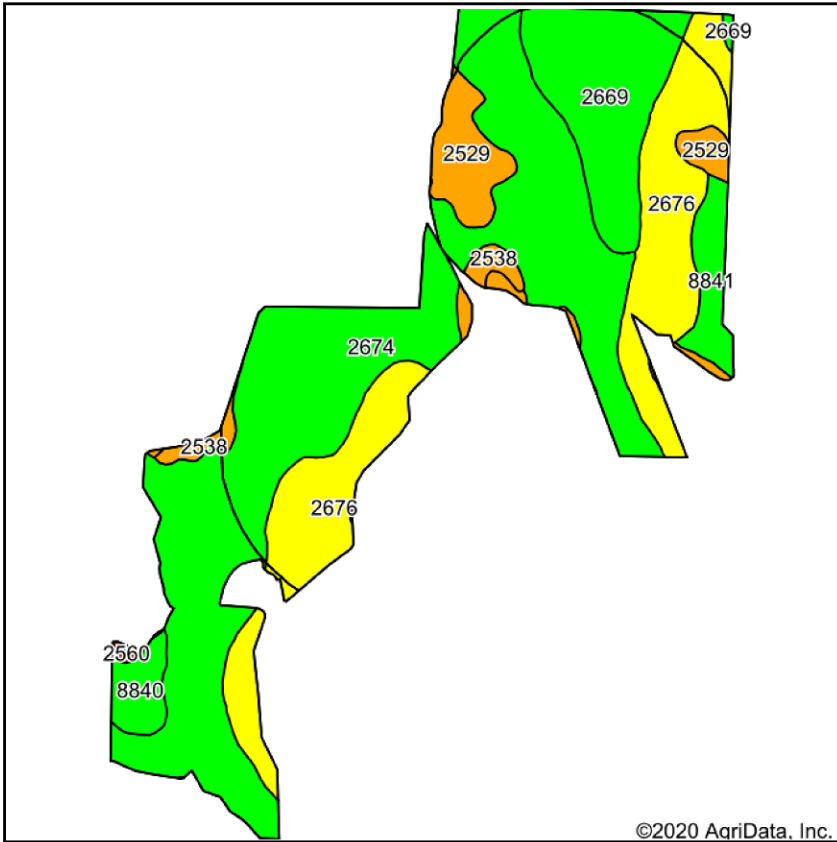


8/18/2020

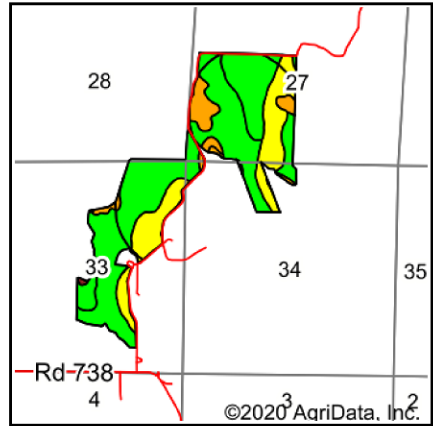
Maps Provided By:
 **surety**
CUSTOMIZED ONLINE MAPPING
© AgriData, Inc. 2020 www.AgriDataInc.com

Field borders provided by Farm Service Agency as of 5/21/2008.

Soils Map



Soils data provided by USDA and NRCS.



State: **Nebraska**
 County: **Frontier**
 Location: **34-7N-28W**
 Township: **Sheridan**
 Acres: **320.98**
 Date: **8/18/2020**



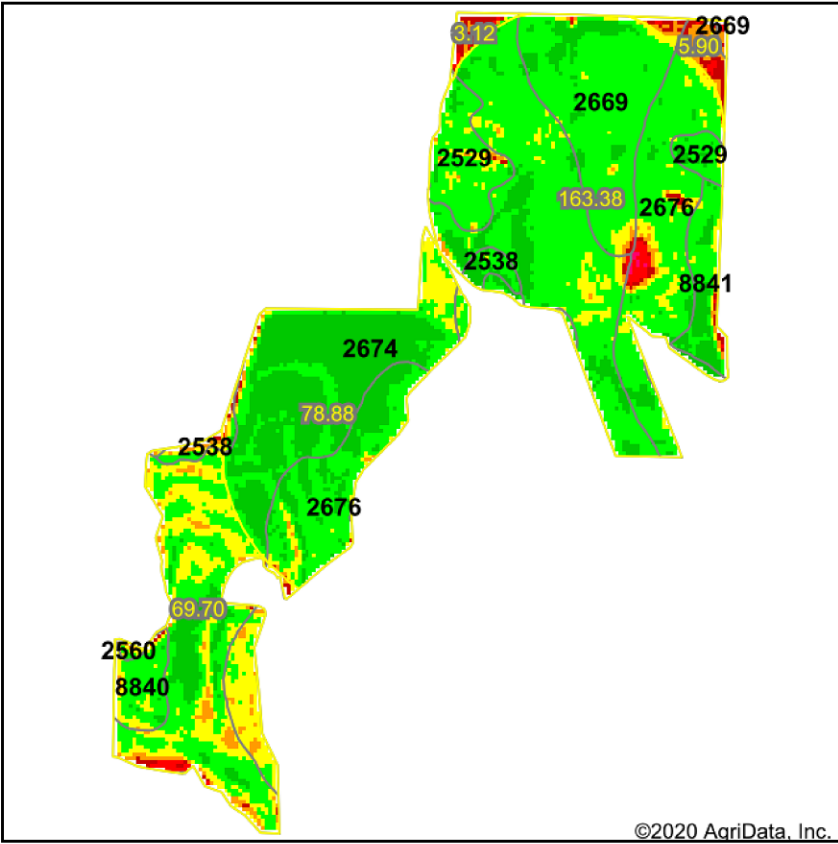
Area Symbol: NF063. Soil Area Version: 18														
Code	Soil Description	Acres	Percent of field	Non-Irr Class Legend	Non-Irr Class *c	Irr Class *c	SRPG	Alfalfa hay	Alfalfa hay Irrigated	Corn	Com Irrigated	Grain sorghum	Winter wheat	*n NCCPI Soybeans
2674	Holdrege silt loam, 1 to 3 percent slopes, plains and breaks	162.34	50.6%		Ile	Ile								76
2676	Holdrege silt loam, 3 to 7 percent slopes, eroded, plains and breaks	73.63	22.9%		IIle	IIle								70
2669	Holdrege silt loam, 1 to 3 percent slopes, eroded	40.45	12.6%		Ile	Ile	68							70
2529	Coly and Uly silt loams, 11 to 30 percent slopes	19.46	6.1%		VIe		34							61
8841	Hall silt loam, 1 to 3 percent slopes	10.25	3.2%		Ile	Ile	70	2	5	42	134	42	39	68
8840	Hall silt loam, 0 to 1 percent slopes	7.68	2.4%		IIc	Iw	71	2	6	46	139	45	40	69
2538	Coly silt loam, 6 to 11 percent slopes, eroded	6.48	2.0%		IVe	IVe	51	1	3	20		24	20	53
2560	Coly-Uly-Hobbs silt loams, 3 to 60 percent slopes	0.69	0.2%		VIIe									28
Weighted Average							15.6	0.1	0.4	2.8	7.6	2.9	2.6	*n 72

*n: The aggregation method is "Weighted Average using all components"

*c: Using Capabilities Class Dominant Condition Aggregation Method

Soils data provided by USDA and NRCS.

Max NDVI(2019) with Soils



LOW RELATIVE BIOMASS High	Value
Dark Green	86 - 99
Green	81 - 85
Light Green	76 - 80
Yellow	71 - 75
Orange	66 - 70
Red	61 - 65
Pink	51 - 60
Purple	41 - 50
Light Purple	21 - 40
Blue	1 - 20
Dark Blue	0 - 0

State: **Nebraska**
 County: **Frontier**
 Location: **34-7N-28W**
 Township: **Sheridan**
 Acres: **320.98**
 Date: **8/18/2020**

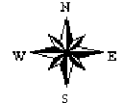
Crop:

Sorghum - 51%
 Corn - 43%

*USDA CropScape



Maps Provided By:



Soils data provided by USDA and NRCS.

©2020 AgriData, Inc.

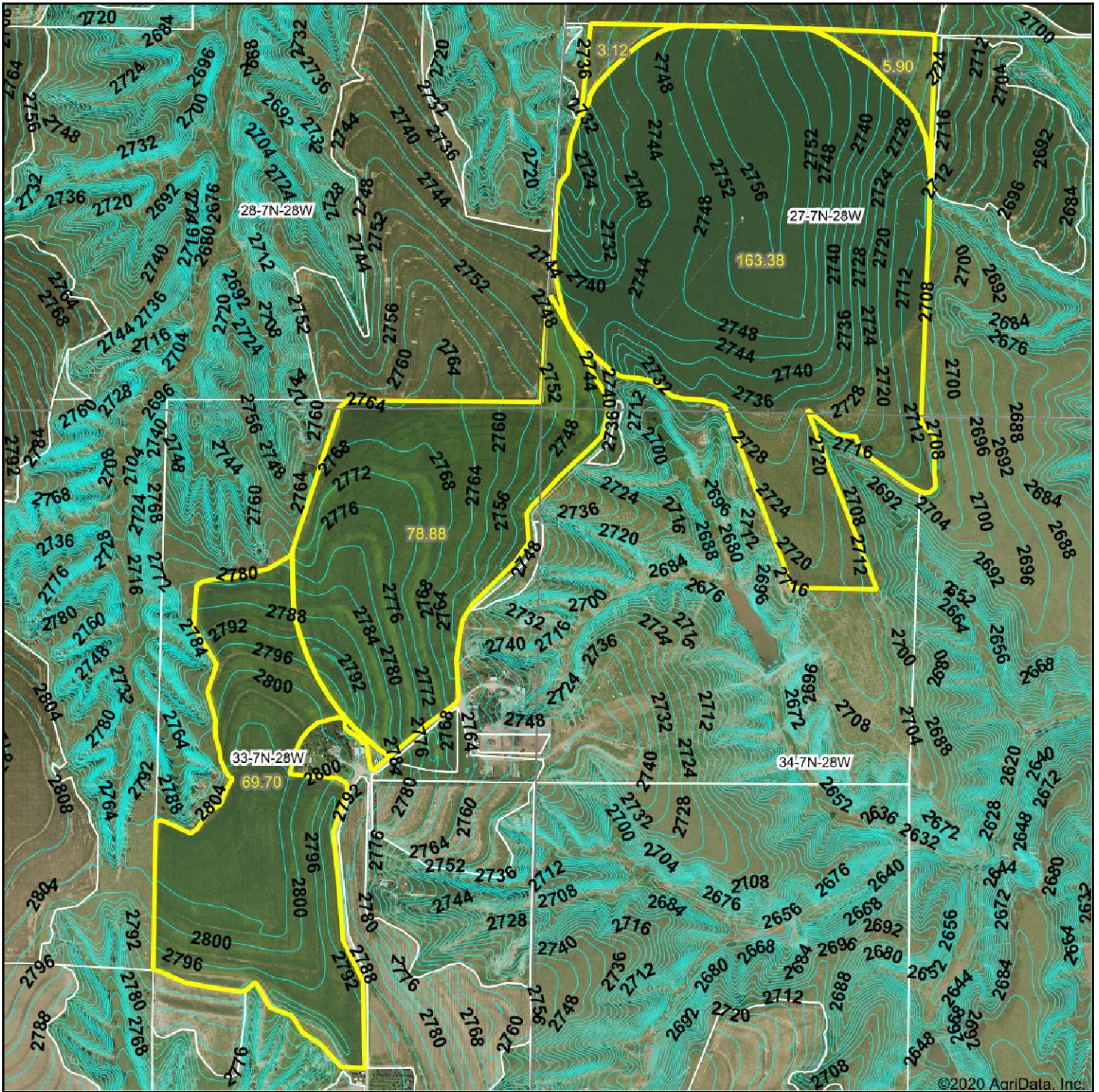
Area Symbol: NE063, Soil Area Version: 18

Code	Soil Description	Acres	Percent of field	Soil Drainage	Non-Irr Class *c	*n NCCPI Overall	NDVI 2019
2674	Holdrege silt loam, 1 to 3 percent slopes, plains and breaks	162.34	50.6%	Well drained	Ile	76	77.6
2676	Holdrege silt loam, 3 to 7 percent slopes, eroded, plains and breaks	73.63	22.9%	Well drained	IIle	70	76.7
2669	Holdrege silt loam, 1 to 3 percent slopes, eroded	40.45	12.6%	Well drained	Ile	70	78.2
2529	Coly and Uly silt loams, 11 to 30 percent slopes	19.46	6.1%	Well drained	VIle	61	77.7
8841	Hall silt loam, 1 to 3 percent slopes	10.25	3.2%	Well drained	Ile	68	78.2
8840	Hall silt loam, 0 to 1 percent slopes	7.68	2.4%	Well drained	Ilc	69	76.8
2538	Coly silt loam, 6 to 11 percent slopes, eroded	6.48	2.0%	Well drained	IVle	53	76.8
2560	Coly-Uly-Hobbs silt loams, 3 to 60 percent slopes	0.69	0.2%	Well drained	VIIle	29	73.7
Weighted Average						*n 72	

*n: The aggregation method is "Weighted Average using all components"

*c: Using Capabilities Class Dominant Condition Aggregation Method

Topography Contours



©2020 AgriData, Inc.



© AgriData, Inc. 2020 www.AgriDataInc.com

Field borders provided by Farm Service Agency as of 5/21/2008

Source: USGS 10 meter dem
 Interval(ft): 4.0
 Min: 2,708.9
 Max: 2,806.7
 Range: 97.8
 Average: 2,758.9
 Standard Deviation: 26.87 ft

0ft 1089ft 2178ft



8/18/2020

34-7N-28W
 Frontier County
 Nebraska

Map Center: 40.539075, -100.497912